

Fill gaps in your Suppliers' Ranges using the FPS catalogue on **MAM Autocat+**

- One catalogue including all FPS suppliers
- When your preference 1 supplier has a gap in range, select the FPS option to view additional parts at one click

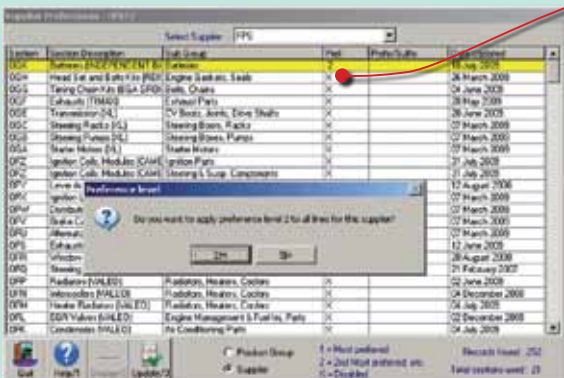
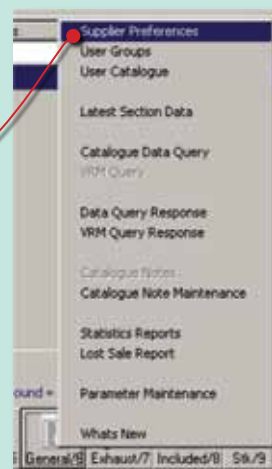
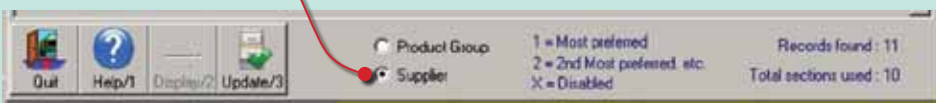
Easy to set up!

- Simply set FPS as a preference 2 supplier (detailed instructions are listed below)
- Keep up-to-date with catalogue changes by regularly updating your settings

Changing your preferences

To fill gaps using the FPS catalogue, simply set FPS as a preference 2 supplier as follows:

1. Open Autocat+, click 'General/6' and select Supplier Preferences (may require password)
2. Choose the 'Supplier' option and select FPS



3. Change the preferences for each category to 2 (a short cut is to enter a preference of '2' against the first item in the list then choose the 'down arrow' key on the keyboard. A prompt will then appear 'Do you want to apply preference level 2 against all lines for this supplier?'. Choose 'Yes')
4. Click the 'Update/3' button to save the changes



This won't affect any results returned from your preference 1 suppliers, and you will only see results from FPS when you want to (see below).

Using the FPS catalogue

- Enter enquiries in Autocat+ in the normal way
- Whenever your enquiry doesn't generate the product you require, simply click on the Supplier drop down filter and select FPS to display our additional part numbers

Years	Description	Part	Supplier	Pos	Ft	Body	CC	Cyl	Type	Valve
02/99-11/04	Brake Disc	NBD202	(All)	RR	Pet	Estate	1998	4	Solid	16
02/99-11/04	Brake Disc	NBD202	National	RR	Pet	Saloon	1998	4	Solid	16
02/99-11/04	Brake Disc	NBD950	TRW/Lucas	FR	Pet	Estate	1998	4	Vented	16
02/99-11/04	Brake Disc	NBD950	Other	FR	Pet	Saloon	1998	4	Vented	16
03/02-11/04	Brake Disc	NBD1214	Other	FR	Pet	Hatch	1993	4	Vented	16
03/02-11/04	Brake Disc	NBD1223	National	RR	Pet	Hatch	1998	4	Solid	16